

ARMY TM 11-5895-543-20P  
NAVY NAVELEX 0967- L P-616-1010  
AIR FORCE TO31W1-2G-234-1

ORGANIZATIONAL  
MAINTENANCE REPAIR PARTS  
AND SPECIAL TOOLS LISTS  
  
FOR  
  
SYNCHRONIZERS, ELECTRICAL  
SN-394(V)1/G (NSN 5895-00-999-2435)  
  
AND  
  
SN-394(V)2/G (NSN 5895-00-257-1093)

DEPARTMENTS OF THE ARMY, THE NAVY, AND THE AIR FORCE

FEBRUARY 1978

TECHNICAL MANUAL  
No. 11-5895-543-20P  
TECHNICAL MANUAL  
NAVELEX 0967-LP-616-1010  
TECHNICAL ORDER  
TO 31W1-2G-234-1

DEPARTMENTS OF THE ARMY,  
  
THE NAVY, AND THE AIR FORCE

WASHINGTON, DC, 16 February 1978

**ORGANIZATIONAL MAINTENANCE REPAIR PARTS**

**AND SPECIAL TOOLS LISTS**

**FOR**

**SYNCHRONIZERS, ELECTRICAL**

**SN-394 (V)/G (NSN 5895-00-999-2435)**

**AND**

**SN-394(V)2/G (NSN 5895-00-257-1093)**

*Current as of 16 August 1977*

**REPORTING OF ERRORS**

You can improve this manual by recommending improvements using DA Form 20282 (Test) located in the back of the manual. Simply tear out the self-addressed form, fill it out as shown on the sample, fold it where shown, and drop it in the mail.

If there are no blank DA Form 2028-2 (Test) in the back of your manual, use the standard DA Form 2028 (Recommended Changes to Publications and Blank Forms) and forward to the Commander, US Army Electronics Command, ATTN: DRSELMA-Q, Fort Monmouth, NJ 07703.

For Air Force, use USAFLC Form 252 (Request for TO Revision or Change). Forward direct to prime ALCIMST.

For Navy, mail comments direct to: Commander, Naval Electronics Systems Command, Code 4903, Washington, D.C. 20360.

In either case a reply will be furnished direct to you.

**Table of Contents**

SECTION		Page	Illus Figure
	I. Introduction . . . . .	1	
	II. Repair parts list . . . . .	5	
Group	00 Synchronizers, Electrical SN-394(V)/G and SN-394(V)2/G	5	1
	01 Case, Electrical Synchronizer CY-4918/G (No parts authorized)		
	02 Synchronizer-Monitor SN-395/G . . . . .	7	2,3
	0201 Electrical Synchronizer Subassembly PL- 1120/G (No parts authorized)		
	0202 Electrical Synchronizer Subassembly PL- 1121/G (No parts authorized)		
	0203 Electrical Synchronizer Subassembly PL- 1122/G (No parts authorized)		

**This manual together with TM 11-5895-543-34NAVELEX 0967-LP-616-1020/TO 31W1-2G-234-2, 16 February 1978, supersedes TM 11-5895-543-25 P/NAVSHIPS0967-220-6030/TO 31W1-2G-234, 1 June 1967.**

**TM 1 1-895-543-20P/NAVELEX 0967-LP-616-1010/TO 31W1-2G-234-1**

	0204	Electrical Synchronizer Subassembly PL-1123/G (No parts authorized)	
	0205	Electrical Synchronizer Subassembly PL- 1124/G (No parts authorized)	
	0206	Synchronizer verification module (No parts authorized)	
	03	Electrical Synchronizer Subassembly PL- 1119/G (No parts authorized)	
	04	Power Supply PP-4540/G .....	13
SECTION	III.	Special tools list .....	15
Group	30	Special Tool, Extender Card Assembly SMD-532026 ..	15
	31	Special Tool, Extender Card Assembly SMD-532022 .....	17
SECTION	IV.	National stock number and part number index .....	18

**SECTION I**

**INTRODUCTION**

**1. Scope**

This manual lists spares and repair parts; special tools; special test, measurement, and diagnostic equipment (TMDE), and other special support equipment required for performance of organizational maintenance of the SN-394(V)1/G and SN-394(V)2/G. It authorizes the requisitioning and issue of spares and repair parts as indicated by the source and maintenance codes.

**2. General**

This Repair Parts and Special Tools List is divided into the following sections:

a. *Section II. Repair Parts List.* A list of spares and repair parts authorized for use in the performance of maintenance. The list also includes parts which must be removed for replacement of the authorized parts. Parts lists are composed of functional groups in numeric sequence, with the parts in each group listed in figure and item number sequence.

b. *Section III. Special Tools List.* A list of special tools, special TMDE, and other special support equipment authorized for the performance of maintenance.

c. *Section IV. National Stock Number and Part Number Index.* A list, in National item identification number (NIIN) sequence, of all National stock numbers (NSN) appearing in the listings, followed by a list, in alphameric sequence, of all part numbers appearing in the listings. National stock numbers and part numbers are cross-referenced to each illustration figure and item number appearance.

**3. Explanation of Columns**

a. *Illustration.* This column is divided as follows

- (1) *Figure number.* Indicates the figure number of the illustration on which the item is shown.
- (2) *Item number.* The number used to identify item called out in the illustration.

b. *Source, Maintenance, and Recoverability (SMR) Codes*

(1) *Source code.* Source codes indicate the manner of acquiring support items for maintenance, repair, or overhaul of end items. Source codes are entered in the first and second positions of the Uniform SMR Code format as follows:

<i>Code</i>	<i>Definition</i>
PA -	Item procured and stocked for anticipated or known usage.
PE -	Support equipment procured and stocked for initial issue or outfitting to specified maintenance repair activities.

**NOTE**

Cannibalization or salvage may be used as a source of supply for any items source coded above except those coded XA and aircraft support items as restricted by AR 700-42.

2) *Maintenance code.* Maintenance codes are assigned to indicate the levels of maintenance authorized to USE and REPAIR support items. The maintenance codes in the third and fourth positions of the uniform SMR Code format as follows:

a) The maintenance code entered in the third position will indicate the lowest maintenance level authorized to remove, replace, and use the support item. The maintenance code entered in the third position will indicate one of the following levels of maintenance:

<i>Code</i>	<i>Application/Explanation</i>
O --	Support item is removed, replaced, used at the organizational level.

(b) The maintenance code entered in the fourth position indicates whether the item is to be repaired and identifies the lowest maintenance level with the capability to perform complete repair (i.e., all authorized maintenance functions.) This position will contain one of the following maintenance codes:

<i>Code</i>	<i>Application/Explanation</i>
F	The lowest maintenance level capable of complete repair of the support item is the direct support level.
D-	The lowest maintenance level capable of complete repair of the support item is the depot level.
Z-	Nonreparable. No repair is authorized.

(3) *Recoverability code.* Recoverability codes are assigned to support items to indicate the disposition action on unserviceable items. The recoverability code is entered in the fifth position of the Uniform SMR Code format as follows:

<i>Recoverability codes</i>	<i>Definition</i>
Z	Nonreparable item. When unserviceable condemn and dispose at the level indicated in position 3.
F	Reparable item. When uneconomically repairable, condemn and dispose at the direct support level
D	Reparable item. When beyond lower level repair capability, return to depot. Condemnation and disposal not authorized below depot level.
L	Reparable item. Repair, condemnation, and disposal not authorized below depot/specialized repair activity level

c. *National Stock Number.* Indicates the National stock number assigned to the item and will be used for requisitioning purposes.

d. *Part Number.* Indicates the primary number used by the manufacturer (individual, company, firm, corporation, or Government activity), which controls the design and characteristics of the item by means of its engineering drawings, specifications, standards, and inspection requirements to identify an item or range of items.

NOTE

When a stock numbered item is requisitioned, the repair part received may have a different part number than the part being replaced.

e. *Federal Supply Code for Manufacturer (FSCM).* The FSCM is a 5-digit numeric code listed in SB 708-42 which is used to identify the manufacturer, distributor, or Government agency, etc.

f. *Description* Indicates the Federal item name and, if required, a minimum description to identify the item.

g. *Unit of Measure (U/M).* Indicates the standard of the basic quantity of the listed item as used in performing the actual maintenance function. This measure is expressed by a two-character alphabetical abbreviation (e.g., ea, in, pr, etc). When the unit of measure differs from the unit of issue, the lowest unit of issue that will satisfy the required units of measure will be requisitioned.

h. *Quantity Incorporated in Unit.* Indicates the quantity of the item used in the breakout shown on the illustration figure, which is prepared for a functional group, subfunctional group, or an assembly

4 Special Information

a. The following publication pertains to the SN-394(V)I/G and SN-394(V)2/G and its components:  
TM 11-5895-543-12, Synchronizer, Electrical SN-394(V)G

b. The illustrations in this manual are identical to those published in TM 11-5895-54334P. Only those parts assigned the third position SMR maintenance code "C" or "O" are listed in the tabular listing; therefore, there may be a break in the item number sequence. Only illustrations containing organizational authorized items appear in this manual.

**5. How to Locate Repair Parts**

a. When National stock number or part number is unknown.

(1) *First.* Using the table of contents, determine the functional group within which the item belongs. This is necessary since illustrations are prepared for functional groups and listings are divided into the same groups.

(2) *Second* Find the illustration covering the functional group to which the item belongs.

(3) *Third* Identify the item on the illustration and note the illustration figure and item number of the item.

(4) *Fourth* Using the Repair Parts Listing, find the figure and item number noted on the illustration.

b. When National stock number or part number is known.

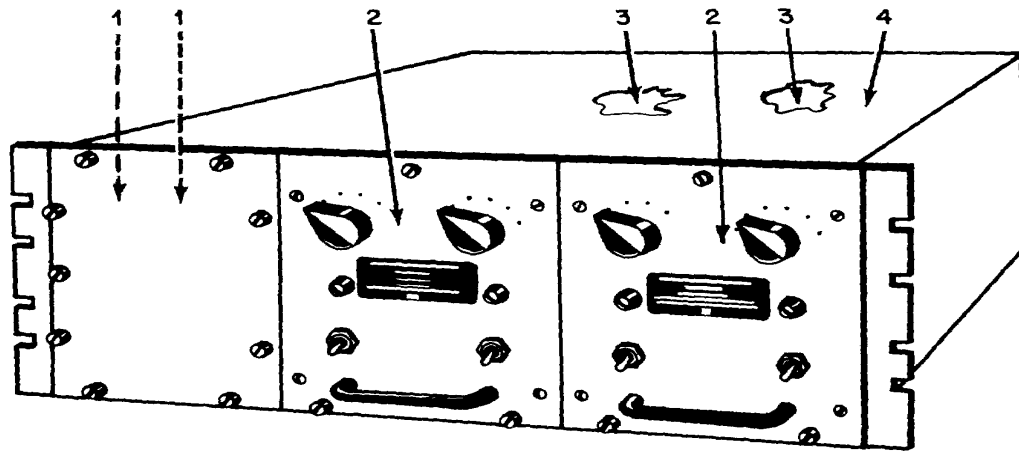
(1) *First.* Using the Index of National Stock Numbers and Part Numbers, find the pertinent National stock number or part number. This index is in NIIN sequence followed by a list of part numbers in alphameric sequence, cross-referenced to the illustration figure number and item number.

(2) *Second* After finding the figure and item number, locate the figure and item number in the repair parts list.

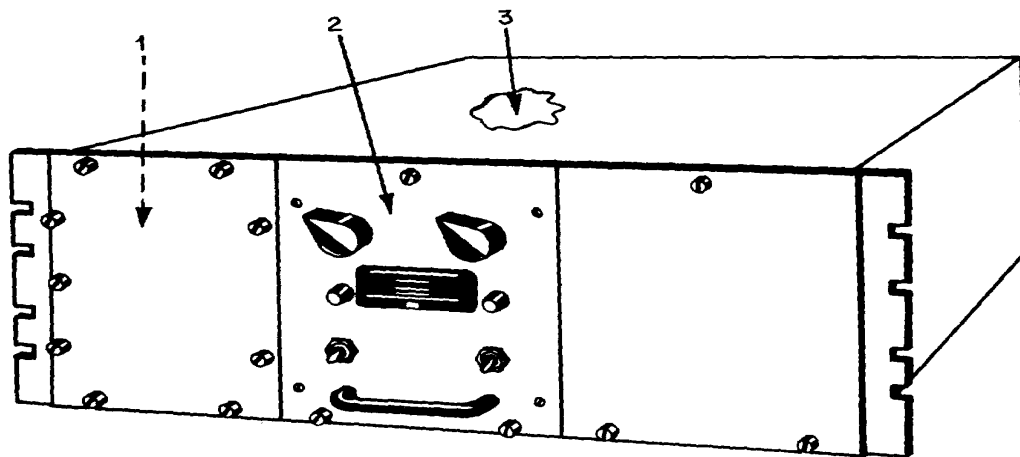
**6. Abbreviations**

Not applicable.

(Next printed page is 4.)



DUAL CONFIGURATION



SINGLE CONFIGURATION

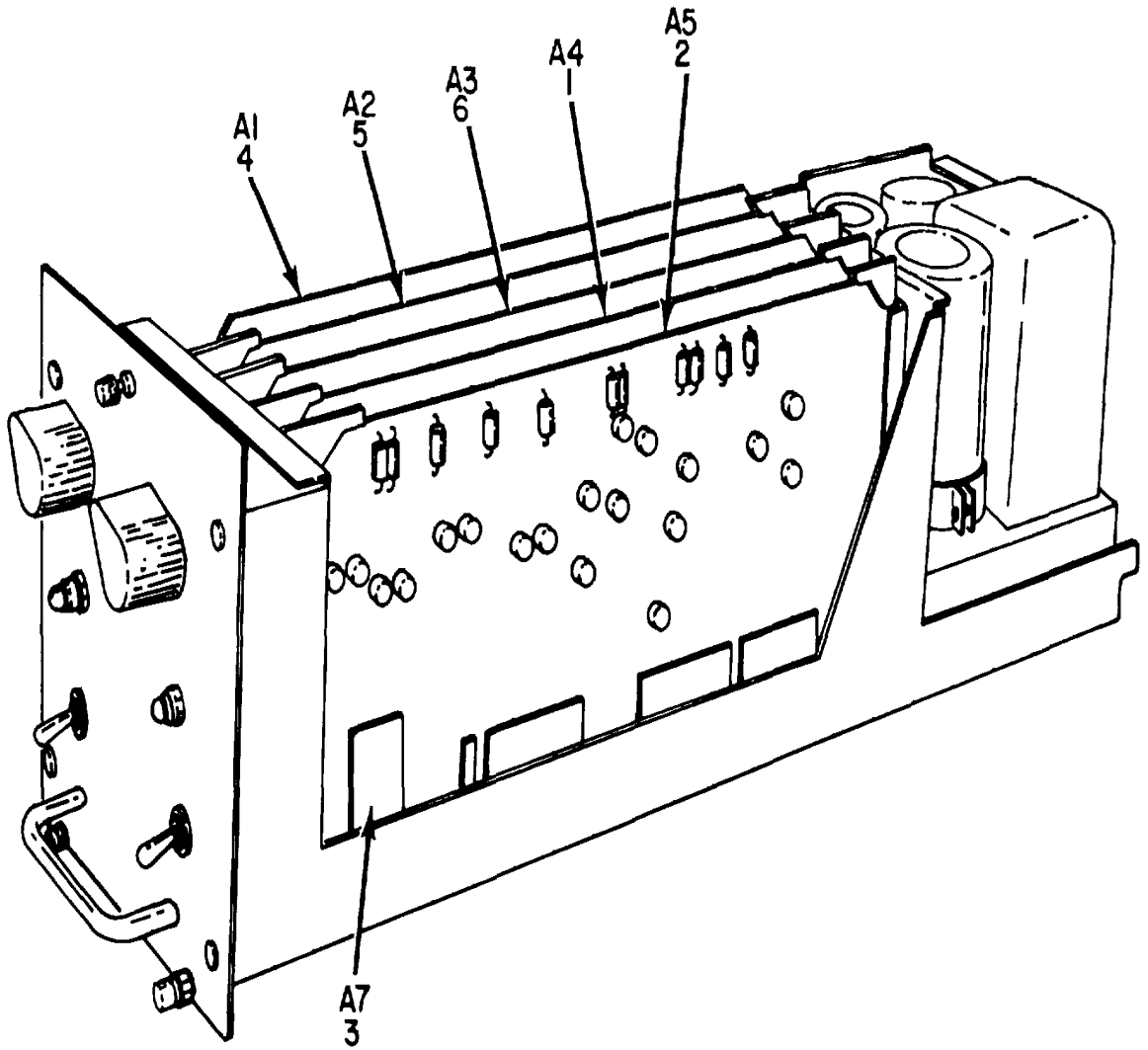
EL4CB001

Figure 1. Synchronizers, Electrical SN-394(V)1/G and SN-394(V)2/G

SECTION II

TM 11-5895-543-20P/NAVELEX 096LP-616-1010/TO 31W1-2G-234-1

(1) ILLUSTRATION		(2) SMR CODE	(3) NATIONAL STOCK NUMBER	(4) FSCM	(5) PART NUMBER	(6) DESCRIPTION  USABLE ON CODE	(7) U/M	QT Y INC IN UNI T
(a) FIG NO.	(b) ITEM NO.							
1	1	PAODL	5895-00-999-2441	80058	PL-1119/G	GROUP 00 SYNCHRONIZERS,ELECTRICAL SN-		
1	1	PAODL	5895-00-999-2441	80058	PL-1119/G	394(VII/G AND SN-394(V)2/G	EA	1
1	2	PAOFF	5895-00-999-2440	80058	SN-395/G	ELECTRICAL, SYNC (USE ON SN394(V)1/G)	EA	2
1	2	PAOFF	5895-00-999-2440	80058	SN-395/G	ELECTRICAL, SYNC (USE ON SN394(V)2/G	EA	1
1	3	PAOFF	596-99-9226-0806	80058	PP-4540/G	SYNCHRONIZER-MON(USE ON SN-394(V)1/G	EA	2
1	3	PAOFF	5965-00-926-0806	80058	PP-4540/G	SYNCHRONIZER-MON(USE ON SN-394(V)2/G	EA	1
						POWER SUPPLY (USE ON SN394(V)1/G)	EA	2
						POWER SUPPLY (USE ON SN-394(V)2/G	EA	



NOTE: FOR COMPLETE REFERENCE DESIGNATION  
PREFIX WITH A3.

EL4CB007

Figure 2. Synchronizer-Monitor SN-395/G.



SECTION II

TM 11-5895-543-20P/NAVELEX 096ZP-616-101/TO 31W1-2G-234-1

(1) ILLUSTRATION		(2) SMR CODE	(3) NATIONAL STOCK NUMBER	(4) FSCM	(5) PART NUMBER	(6) DESCRIPTION  USABLE ON CODE	(7) U/M	QTY INC IN UNIT
(a) FIG NO.	(b) ITEM NO.							
						GROUP 02 SYNCHRONIZER-MCNITCM SN-395/G		
2	1	POADL	5895-00-999-2437	80058	PL-1123/G	ELECTRICAL, SYNC	EA	1
2	2	PAODL	5895-00-999-2436	80058	PL-1124/G	ELECTRICAL, SYNC	EA	1
2	3	PAODL	5895-00-917-1923	80063	SMD546873	SYNCHRONIZER ASSY	EA	1
2	4	PAODL	5895-00-999-2442	80058	PL-1120/G	ELECTRICAL SYNC	EA	1
2	5	PAODL	5895-00-999-2439	80058	PL-1121/G	ELECTRICAL SYNC	EA	1
2	6	PAODL	5895-00-999-2438	80058	PL-1122/G	ELECTRICAL SYNC	EA	1
7								

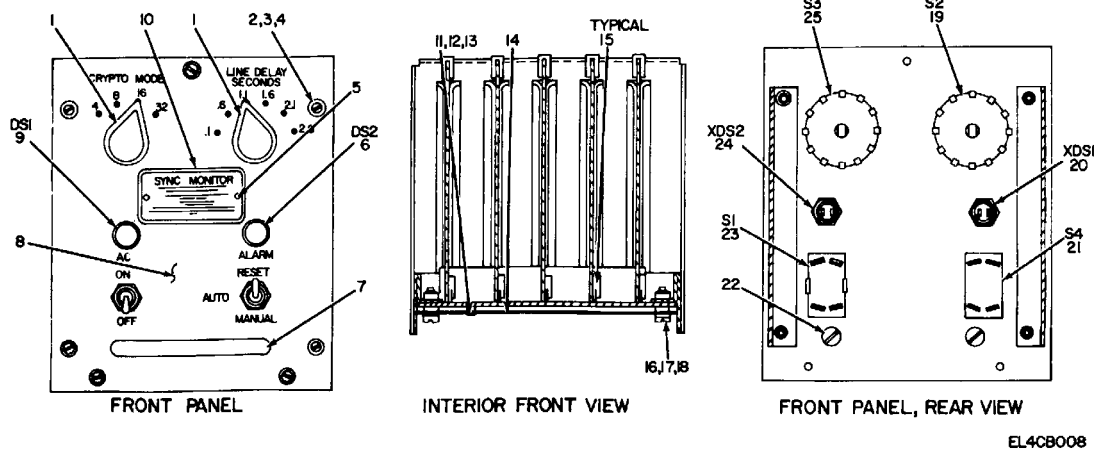


Figure 3. Synchronizer-Monitor SN-395/G.  
8

**SECTION II**

**TM 11-5895-543-20P/NAVELEX 0967-LP-616-1010/TO 31W1-2G-234-1**

(1) ILLUSTRATION		(2) SMR CODE	(3) NATIONAL STOCK NUMBER	(4) FSCM	(5) PART NUMBER	(6) DESCRIPTION  USABLE ON CODE	(7) U/M	QTY INC IN UNIT
(a) FIG NO.	(b) ITEM NO.							
3	1	PAOZZ	5355-00-559-8943	96906	MS91528-2K2B	KNOB	EA	2
3	6	PAOZZ	6240-00-926-7603	08806	380	LAMP, INCANDESCENT	EA	1
3	9	PAOZZ	6240-00-892-4420	96906	MS25252-NE2D	LAMP, GLOW	EA	1

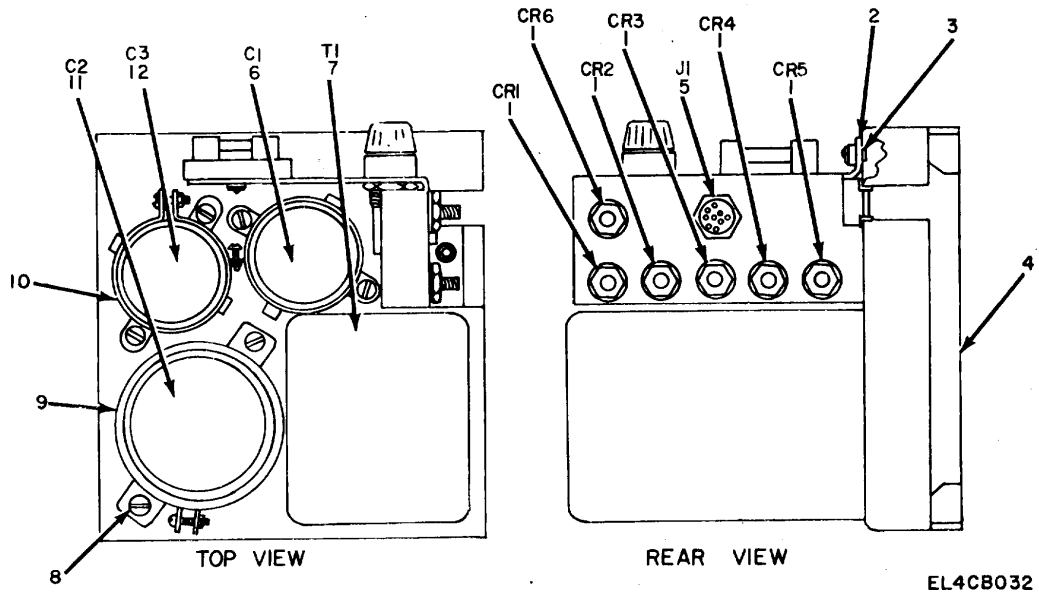
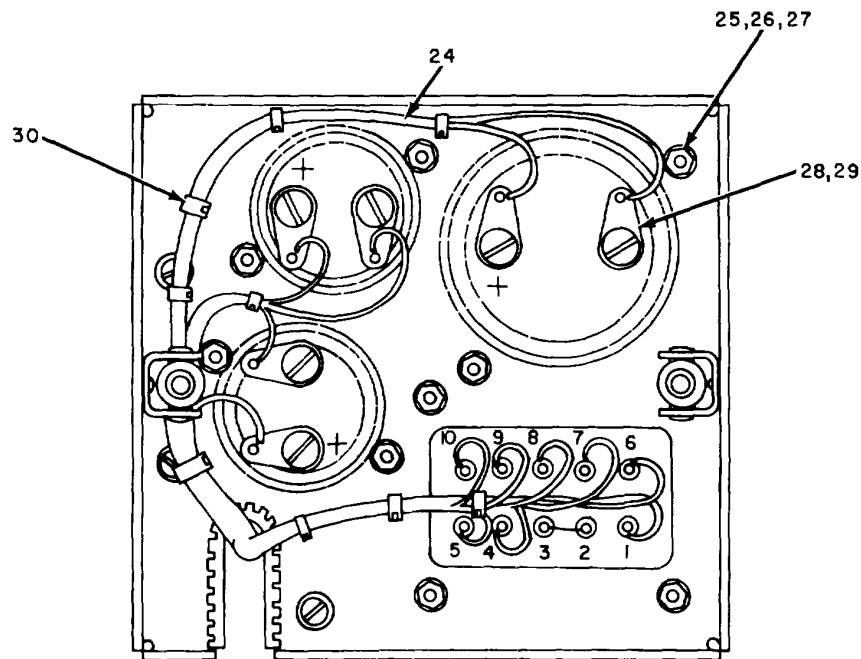
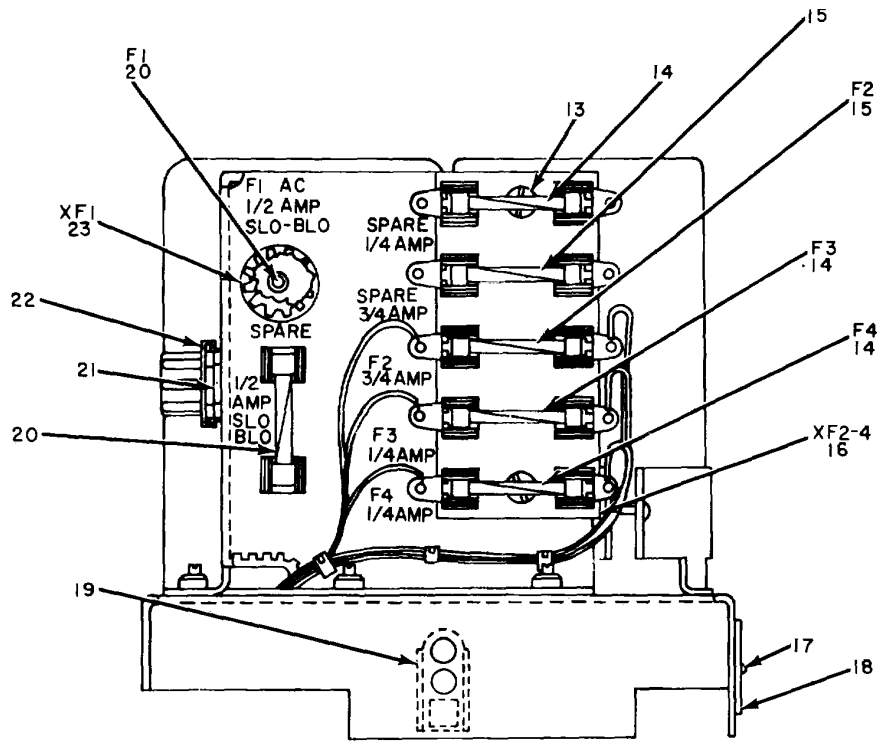


Figure 4. Power Supply PP-4540/G (Sheet 1 of 2).  
11



EL4CB033

Figure 4. Power Supply PP-4540/G (Sheet 2 of 2).

**SECTION II**

**TM 11-5895-543-20P/NAAVELEX 0967-LP-616-1010/TO 31W1-2G-234/1**

(1) ILLUSTRATION		(2) SMR CODE	(3) NATIONAL STOCK NUMBER	(4) FSCM	(5) PART NUMBER	(6) DESCRIPTION  USABLE ON CODE	(7) U/M	QTY INC IN UNIT
(a) FIG NO.	(b) ITEM NO.							
4	4	PAOZZ	5920-00-235-8358	81349	FO1A250V1-4A	GROUP 04 POWER SUPPLY PP-4540/G FUSE, CARTRIDGE	EA	3
4	15	PAOZZ	5920-00-280-5024	81349	FO1A125V3-4A	FUSE, CARTRIDGE	EA	2
4	20	PAOZZ	5920-00-199-9498	81349	FO28250V1-2A	FUSE, CARTRIDGE	EA	2

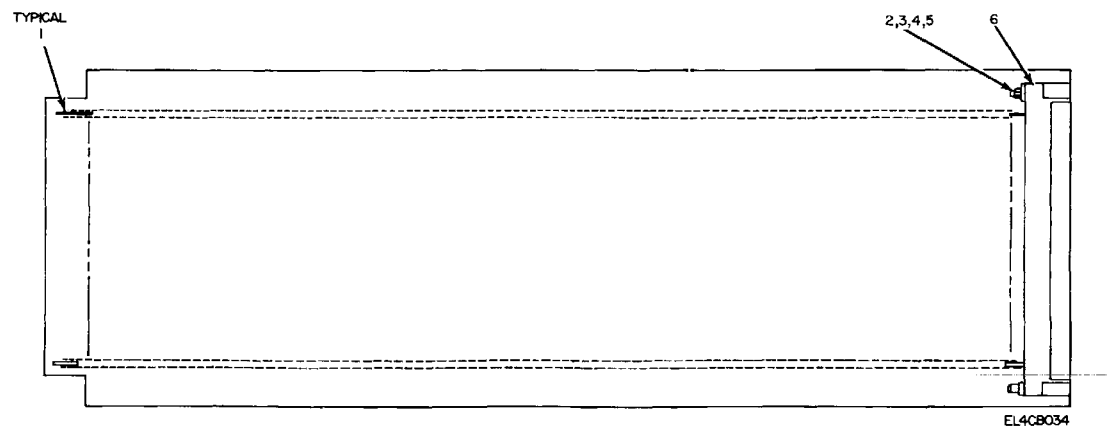


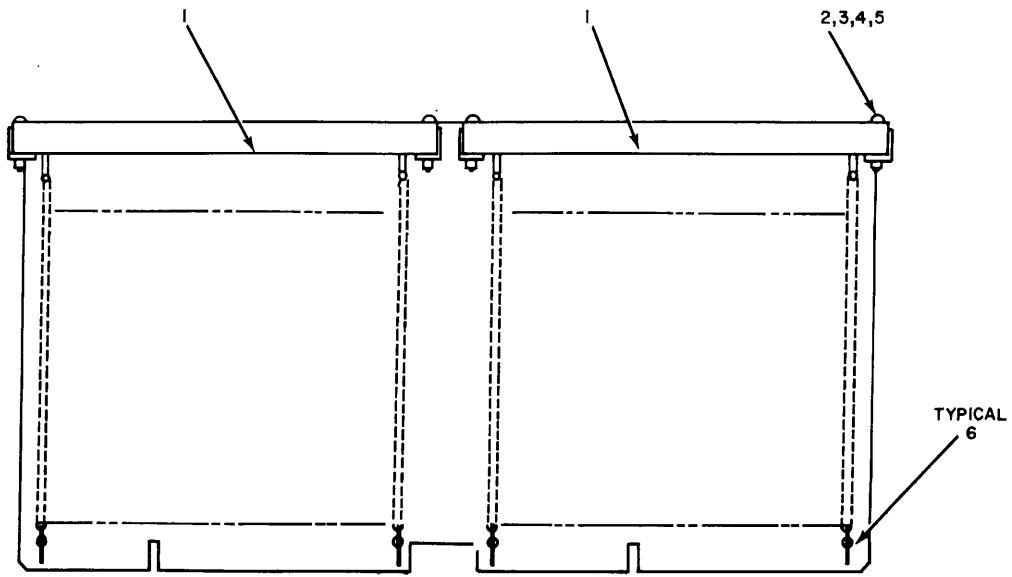
Figure 5. Special Tool Extender Card Assembly SMD-532026.

**SECTION II**

**TM 11-5895-543-2P/NAVELEX 0967-LP-616-1010/TO 31W1-2G-234-1**

(1) ILLUSTRATION		(2) SMR CODE	(3) NATIONAL STOCK NUMBER	(4) FSCM	(5) PART NUMBER	(6) DESCRIPTION  USABLE ON CODE	(7) U/M	QTY INC IN UNIT
(a) FIG NO.	(b) ITEM NO.							
5		PEODL	5895-00-933-6832	80063	SMD532026	GROUP 30 SPECIAL TOOL, EXTENDER CARD ASSEMBLY SMD-532026  EXTERNDER CARD ASSY  BO1: 1 AUTH PER 1 EQUIPMENT		





EL4CB035

Figure 6. Special Tool, Extender Card Assembly SMD-532022.

**SECTION III**

**TM 11-5895-543-20P/NAVELEX 0967-LP-616-1010/TO 31W1-2G-234-1**

(1) ILLUSTRATION		(2) SMR CODE	(3) NATIONAL STOCK NUMBER	(4) FSCM	(5) PART NUMBER	(6) DESCRIPTION  USABLE ON CODE	(7) U/M	QTY INC IN UNIT
(a) FIG NO.	(b) ITEM NO.							
6		PEODL	5895-00-933-6831	80063	SMD532022	GROUP 31 SPECIAL TOOL, EXTENDER CARD ASSEMBLY SMD-532022  EXTENDER CARD ASSY BO1: 1 AUTH PER 1 EQUIPMENT		

SECTION IV NATIONAL STOCK NUMBER AND PART NUMBER INDEX

NOTE: LATEST NATIONAL STOCK NUMBER ASSIGNMENTS ARE AT END OF INDEX.

STOCK NUMBER	FIGURE NO.	ITEM NO.	STOCK NUMBER	FIGURE NO.	ITEM NO.
5920-00-199-9498	4	20	5895-00-933-6831	6	0
5920-00-235-8358	4	14	5895-00-933-6832	5	0
5920-00-280-5024	4	15	5895-00-999-2436	2	2
5355-00-559-8943	3	1	5895-00-999-2437	2	1
6240-00-892-4420	3	9	5895-00-9S9-2438	2	6
589S-00-917-1923	2	3	5895-00-999-2441	1	1
6240-00-926-7603	3	6	5895-00-999-2442	2	4

PART NUMBER	FSCM	FIG. NO.	ITEM NO.	PART NUMBER	FSCM	FIG. NO.	ITEM NO.
FOIA125V3-4A	81349	4	15	PL-1123/G	80058	2	1
FOIA25OVI-4A	81349	4	14	PL-1124/G	80058	2	2
F02B250V1-2A	81349	4	20	PP-4540/G	80058	1	3
MS25252-NE2D	96906	3	9	SMD532027	80063	6	0
MS91528-2K2B	96906	3	1	SMD532076	80063	5	0
PL-1119/G	80058	1	1	SMD546873	80063	2	3
PL-1120/G	80058	2	4	SN-395/G	80058	1	2
PL-1121/G	80058	2	5	380	08806	3	6
PL-1122/G	80058	2	6				

LATEST NATIONAL STOCK NUMBER ASSIGNMENTS

STOCK NUMBER	FIGURE NO.	ITEM NO.	STOCK NUMBER	FIGURE NO.	ITEM NO.
			5895-00-999-2439	2	5
5895-00-922-0806	1	3	5895-00-999-2440	1	2

By Order of the Secretaries of the Army, the Navy, and the Air Force:

**BERNARD W. ROGERS**  
*General, United States Army*  
*Chief of Staff*

Official

**J.C. PENNINGTON**  
*Brigadier General, United States Army*  
*The Adjutant General*

**EARL B. FOWLER**  
*Rear Admiral, United States Navy*  
*Commander, Naval Electronic*  
*Systems Command*

**DAVID C. JONES, General, USAF**  
*Chief of Staff*

Official:

**F. M. ROGERS, General, USAF**  
*Commander, Air Force Logistics Command*

Distribution:

*Active Army*

USAISCOM (2)	GENDEPS (2) except
USASAE (1)	Pirmasens (10)
DARCOM (1)	Sig Dep (2)
TRADOC (2)	Sig Sec GENDEPS (2)
OS Maj Comd (5)	Sig FLDMS (1)
USACOMZEUR (5)	USAERDAW (1)
USAREUR (5)	Fort Carson (5)
TECOM (2)	Ft Richardson (ECOM) (1)
USACC (10)	DCA (FE Rqn) (2)
USACC-EUR (25)	DCA (SEA) (2)
USACC-A (5)	DCA (Spain, European Area) (2)
HQ, 7th Sig Comd (5)	DCA (Alaskan Area) (2)
Sig Gp (USACC) Taiwan (3)	Units org under fol TOE: (1)
USASATCOMA (2)	11-75
USACSA (4)	11-85
USASIGS (5)	11-95
USAICS (3)	11-98
7th & 8th Armies (4)	11-137
Corps (2)	11-302
Army Depots (2) except	11-347
ATAD (10)	11-367
'LBAD (101	11-368
SAAD (25)	11-500(AA-AC)
TOAD (14)	19-134
USAERDAA (1)	29-136

NG: None

USAR: None

For explanation of abbreviations used see, AR 310-50